



FlashCut **Fashion**

STYLISH, RELIABLE, ERGONOMIC CUTTING SYSTEMS



PERFECT SYNTHESIS OF AN ATTRACTIVE DESIGN AND TECHNICAL/FUNCTIONING FEATURES AT THE STATE-OF-THE-ART, THE CUTTING SYSTEMS OF THE FASHION SERIES REPRESENT THE NEW BENCHMARK IN LEATHER GOODS AND FOOTWEAR PRODUCTION.

THEIR TWO CUTTING HEADS, PRECISION, SPEED AND RELIABILITY, JOINT TO A HIGHLY ERGONOMIC DESIGN AND TO AN EASY AND INTUITIVE SOFTWARE INTERFACE ENABLE YOU TO REACH HIGH PRODUCTION RESULTS AND MAXIMUM OUTPUT EVEN IN CASE OF BIG PATTERNS.



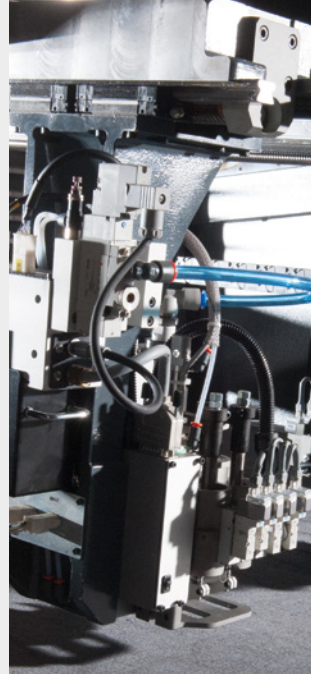
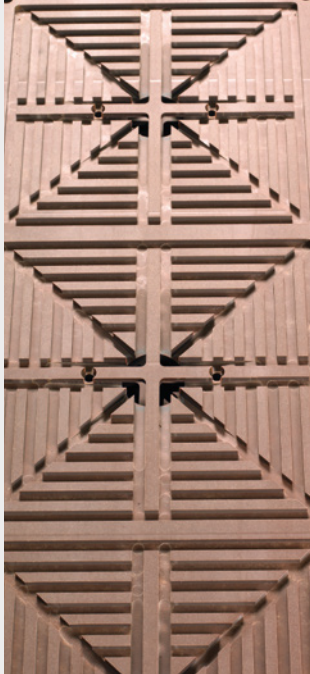
FlashCut **Fashion** 16 B



To satisfy any cutting need, the Fashion tables can cut with 5- or 7-tool heads, which can be equipped with a wide range of cutting chucks, marking pen and 3 or 5 punching tools, adjustable and rotating, with high punching frequency. The powerful Venturi system can be fitted for cutting scraps suction.



High brightness overhead projectors assure a clear visualization of any material or color in any environment. Using LED lamps they grant high brightness, stability in power projection, low maintenance and long life.



PARTITIONED VACUUM SYSTEM

Powerful, partitioned, adjustable vacuum system, to be adapted to any type of material or job and concentrated where needed. It allows the best fixing during cutting and the highest energy saving at the same time.

HIGH CUTTING ACCURACY

Flat working surface and perfect parallelism with knife, supported by a rigid structure, grant homogeneous cutting precision and longer life to feeding belt.

PERFORMANCE AND RELIABILITY

Perfect quality and considerable cutting speed are the result of a solid, accurate mechanic engineering and of a state-of-the-art electronics.

OPTIMIZED NESTING

Customized systems for automatic nesting and friendly interface dramatically reduce the overall time for placing the shapes to be processed and optimize the material yields.

DESIGN AND ERGONOMICS

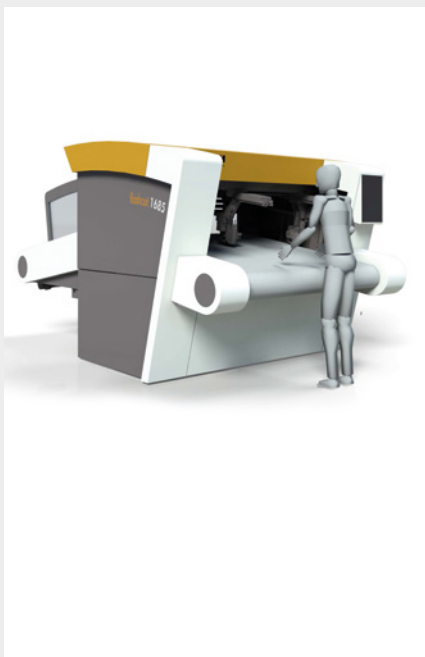
The original and ergonomic design has been studied to combine easiness of use and style.

PICKING ASSISTANCE

To speed up and ease the picking of cut pieces, the software managing the back projectors gathers parts by size and shows the cut pieces divided by color (2UP models).

ACQUISITION SYSTEMS

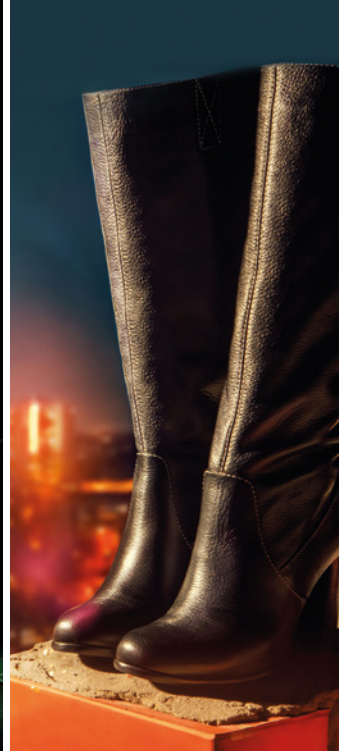
To speed up the overall time for placing the shapes to be processed and optimize skilled manpower, the Fashion models can be combined with a wide range of off-line acquisition systems (Visionplus models).



Fashion models

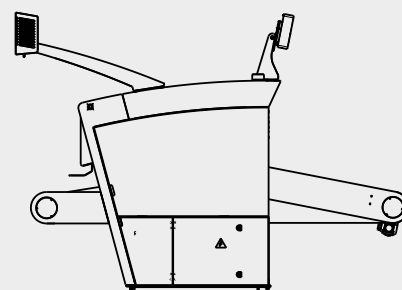
DESIGN
ERGONOMICS
HIGH OUTPUT
BEST PERFORMANCE

State-of-the-art cutting systems which represent the new benchmark in leather goods and footwear production.



CONFIGURATIONS

AVAILABLE MODELS	STANDARD EQUIPMENT	OPTIONS
	Projection picking area	Front feeder (single roll)
FlashCut Fashion 16 B UP		x
FlashCut Fashion 16 B 2UP	x	x



TECHNICAL DATA

MODELS	WORKING AREA (mm)	MAX. ABSORPTION (kW)	SIZES (mm)	WEIGHT (Kg)
FlashCut Fashion 16 B UP	1540 x ∞	10,5 / 21,5 *	2340 x 3747 x 2706h	2140
FlashCut Fashion 16 B 2UP	1540 x ∞	10,5 / 21,5 *	2340 x 3747 x 2706h	2170

* data referred to a machine equipped with 8,5 kW or 12,5 kW pump

Subject to change without notice - February 2015 edition



HEADQUARTERS

ATOM ITALY

ATOM s.p.a. Via Morosini, 6 - 27029 Vigevano - PV - Italy - T +39 0381 3021 - info.atom@atom.it - www.atom.it